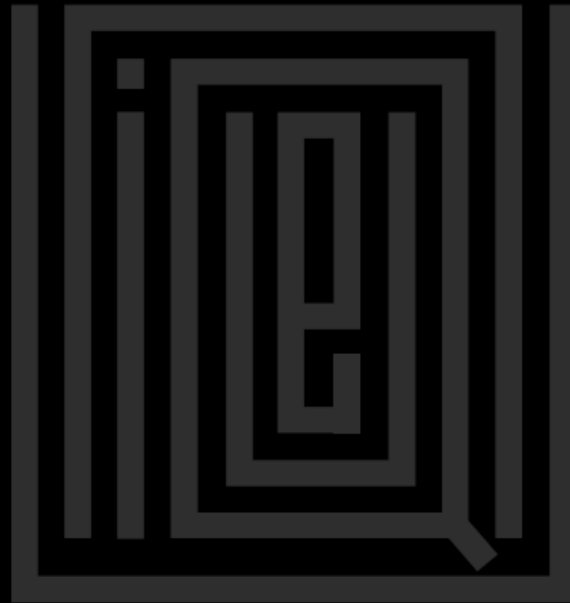


# APARTMENTS FOR RENT

## THE CHOURAQUI RESIDENCE

8 EIN ROGEL STREET, JERUSALEM



A UNIQUE CONTEMPORARY HOME  
IN ONE OF THE WORLD'S MOST HISTORIC LOCATIONS



## The Chouraqui Residence

A unique contemporary style building, in one of the world's most historically renowned locations.

The Chouraqui Residence is a prestigious new development, with elegant modern architecture and breathtaking uninterrupted panoramic Jerusalem views.

The residence combines Jerusalem's captivating biblical history with a superb contemporary new building. The residence is located on Ein Rogel Street, within walking distance of the Old City.

Whilst steeped in history, this area of Jerusalem is also a vibrant hub of culture and modern entertainment.

The Chouraqui Residence is close to many popular social spots including: The First Station centre of entertainment and culture, Yes Planet Cinemas, Zappa Music Club, the Jerusalem Cinematheque, Khan Theatre and Sultan's Pool.

Located just a short drive away are the bustling city centre, new embassy district, and many historical wonders.

The Chouraqui Residence really does offer the ideal place to live for both business and pleasure.





Street View, The Chouraqui Residence®













## The finest view in Jerusalem



With a panoramic view of Jerusalem, the Penthouse at the Chouraqui Residence overlooks the Judean Desert, Mount of Olives, Old City, Mount Zion, Jaffa Gate, Mamilla, King David Hotel, Montefiore Windmill, and more. On clear days, residents can enjoy a glimpse of the Dead Sea, Jordan's Moab Mountains and even Amman.

- 1 **King David Hotel** Opened in 1931, The King David Hotel is a 5-star hotel that has traditionally been the chosen venue for hosting heads of state, dignitaries, and other international personalities during their visits to Jerusalem.
- 2 **Yemin Moshe & Montefiore Windmill** This beautiful 1980s neighbourhood in Jerusalem is constructed of quaint stone buildings and was built in the 1890's by Moses Montefiore in response to overcrowding within the walls of the Old City. The first set of houses were known as Mishkenot Shaananim, which were the first Jewish properties to be built outside the Old City. The neighbourhood was expanded dramatically, and its landmark, the Montefiore Windmill was built with the intention of being a source of income for the residents. Today, the neighbourhood's quaint alleyways are a popular place to stroll and explore.
- 3 **Mamilla Mall** This upscale shopping street is the only open-air mall in West Jerusalem. Visitors may also enjoy the luxurious David Citadel and Alrov Mamilla Hotels.
- 4 **Jaffa Gate** One of the seven open gates of the Old City, Jaffa Gate serves as the main tourist entry point to the city. Just inside the gate, you'll find the Old City bazaar and the Tower of David Museum.
- 5 **Sultan's Pool** An ancient water basin modernised by Suleiman the Magnificent, the Ottoman sultan who built the current walls of the Old City, Sultan's Pool has become one of the most prominent venues in Jerusalem for modern music.

- 6 **Mount Zion** The highest point in ancient Jerusalem, is the broad hill south of the Old City's Armenian Quarter.
- 7 **Abbey of the Dormition** According to local tradition, it was on this spot, near the site of the Last Supper, that the Blessed Virgin Mary died, or at least ended her worldly existence.
- 8 **King David's Tomb and The Room of the Last Supper** This site is considered by some to be the burial place of biblical King David of Israel, according to a Christian, Jewish, and Muslim tradition. The "Upper Room" in the compound, is traditionally known to be the site of Jesus's Last Supper.
- 9 **The Western/Wailing Wall (The Kotel)** Is considered to be the most religious site in the world for Jewish people due to its proximity to the Temple Mount where previous first and second temples were located.
- 10 **Dome of the Rock** Located on the Temple Mount, this Islamic shrine is believed to be the site where Abraham attempted to sacrifice his son. The site's great significance for Muslims derives from traditions connecting it to the creation of the world and the belief that Muhammad's Night Journey to heaven started from the rock.
- 11 **Al-Aqsa Mosque** Located on top of the Temple Mount, the Al-Aqsa Mosque is considered to be third holiest site in Islam. Modern Muslims believe that Muhammad was transported from the Great Mosque of Mecca to this location during the Night Journey.

- 12 **The City of David** is an historic name given to the location of Jerusalem's earliest settlement. The site was formerly the royal city of King David, from whom it takes its name, and is arguably one of the most important archaeological sites to visit outside the walls of the old city.
- 13 **Church of Mary Magdalene** Located on the Western slope of the Mount of Olives, commemorates the enigmatic Mary from Magdala, who was one of the few persons named in the Gospels as being present at Christ's crucifixion and the first person recorded as a witness of his resurrection.
- 14 **Gethsemane** Gethsemane is a garden at the foot of the Mount of Olives where, according to the four Gospels of the New Testament, Jesus underwent the agony in the garden and was arrested the night before his crucifixion. It is a place of great resonance in Christianity.
- 15 **The Jewish Cemetery on the Mount of Olives** Arguably the oldest and most important Jewish cemetery. Approximately five centuries old, the cemetery contains between 70,000 and 150,000 tombs from various periods, including those of famous figures in Jewish history. It is considered to be the largest and holiest Jewish cemetery on earth.











## The Story behind The Chouraqui Residence

About Andre Chouraqui: (Algeria 1917 – Jerusalem 2007)

The Chouraqui Residence is located on the land of Andre Chouraqui's family home. Doctor of law, writer, poet, historian, man of action and visionary, Chouraqui is best known for being the only person who translated all three Holy Books – the Hebrew Bible, New Testament and Koran – into French from their original languages.

During World War II, Chouraqui served in the French Resistance and lived in France until 1958 when he came to Israel with his wife Annette Levy and built their home in 1963 for their five children on Ein Rogel Street.

Chouraqui was a worldwide Permanent Delegate of the French Alliance Israelite Universelle, advisor to Prime Minister of Israel, David Ben-Gurion, Deputy Mayor of Jerusalem in charge of international and inter-religious relations under Mayor Teddy Kollek and honorary citizen of Jerusalem.

Chouraqui wrote dozens of books translated into 23 languages, many of which won literary prizes, as well as hundreds of articles. He met many world leaders, including four Popes, the Dalai Lama, and the King of Morocco. Chouraqui's writings range from poetry to legal studies, spanning theatre, philosophical essays, history, and sociology. His goal was to foster peace between different cultures and spiritualities, bringing people together through dialogue.

Andre Chouraqui inspired the world with his writings, many of which were written from his home in Ein Rogel. In 2021, the Jerusalem Municipality named a square in his honour, located just five minutes from the Chouraqui Residence.



David Ben-Gurion, First Prime Minister of Israel  
and Andre Chouraqui, May 1966



Shimon Peres, Former Prime Minister & President of Israel  
and Andre Chouraqui, 1981







# The Chouraqui Residence – Apartments For Rent

No.	Floor	Description
1	Ground	4-rooms 130sq.m front garden apartment with 180° panoramic Jerusalem and Old City view, with a 30sqm garden, two parkings and a storage room
2	Ground	4-rooms 130sq.m front garden apartment with 180° panoramic Jerusalem and Old City view, with a 60sqm garden, two parkings and a storage room
3	Ground	3-rooms 100sq.m rear garden apartment, with a 78sqm garden, a parking and a storage room
4	Ground	2-rooms 50sq.m rear garden apartment, with a 20sqm garden, a parking and a storage room
5	Ground	3-rooms 100sq.m rear garden apartment, with a 73sqm garden, a parking and a storage room
6	1	4-rooms 130sq.m front apartment with 180° panoramic Jerusalem and Old City view, two parkings and a storage room
7	1	4-rooms 130sq.m front apartment with 180° panoramic Jerusalem and Old City view, two parkings and a storage room
8	1	3-rooms 100sqm rear apartment with Jerusaelm Old City view, a parking and a storage room
9	1	2-rooms 50sq.m rear apartment with a parking and a storage room
10	1	3-rooms 110sq.m rear apartment with Jerusaelm Old City view, a parking and a storage room
11	2	4-rooms 130sq.m front apartment with 180° panoramic Jerusalem and Old City view, two parkings and a storage room
12	2	4-rooms 130sq.m front apartment with 180° panoramic Jerusalem and Old City view, two parkings and a storage room
13	2	4-rooms 130sqm rear apartment with Jerusaelm Old-City view, two parkings and a storage room
14	2	4-rooms 130sqm rear apartment with Jerusaelm Old-City view, two parkings and a storage room
15	3	270sq.m penthouse with 120sqm private rooftop, breathtaking 360° panoramic Jerusalem view, a very large master bedroom and two en-suite bedrooms, two parkings and a storage room
16	3	270sq.m penthouse with 120sqm private rooftop, breathtaking 360° panoramic Jerusalem view, a very large master bedroom and two en-suite bedrooms, two parkings and a storage room



# Building Specifications

## Building

- Highest standard construction
- Exterior cladding of Jerusalem stone
- Multi-season shared garden
- Exclusive entrance lobby
- Place for baby strollers and bicycles
- Elevator for eight people (OTIS)
- Spacious underground car park for 26 vehicles with electric gate and direct elevator access
- Electricity sockets connected to each apartment's mains for electric vehicles
- CCTV cameras in the parking lot and public areas
- Apartment intercom with video
- Private storage room for each apartment on the parking floor
- Fire detection systems and sprinklers

## Apartments

- Multi-bolt security doors
- High-quality porcelain granite flooring imported from Italy (large tiles)
- Thick interior walls with full insulation
- Detachment profile between the walls and ceilings
- High-quality, water-protected interior doors with a magnet lock
- Gypsum lowering in all ceilings includes recessed lighting
- Mitsubishi energy-efficient VRF air conditioning and under flooring heating systems
- Thinly designed profile windows
- Electric shutters inside the windows, remotely controlled
- Dual thermal insulation system – indoor and outdoor, to save energy consumption for heating and cooling
- Communication sockets in each room
- Water, gas and electricity sockets on the balconies

## Kitchens

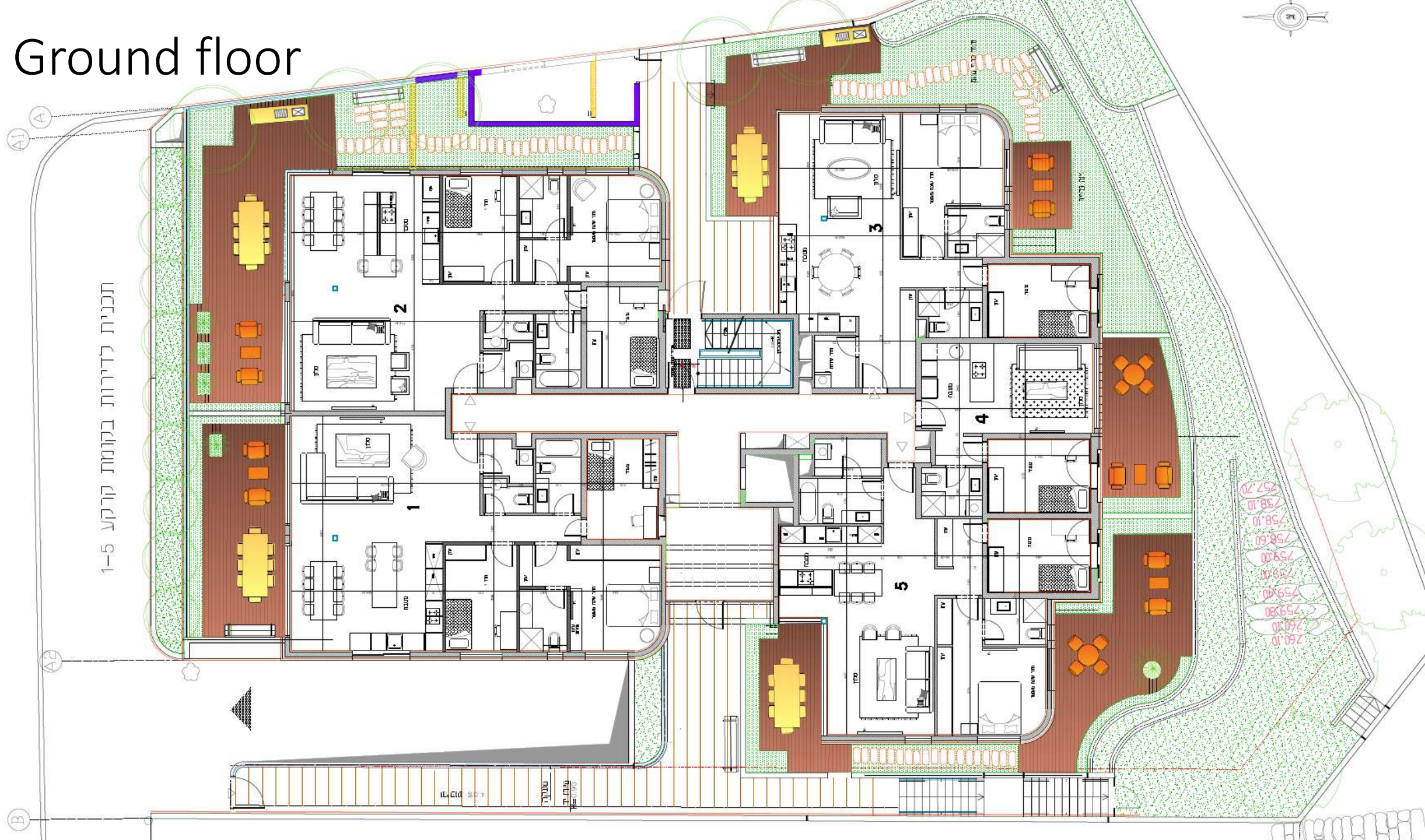
- Caesarstone quartz countertop surfaces
- Integral sinks
- High-quality kitchen faucets
- Three-phase power sockets for oven and stove
- Gas socket
- Dishwasher preparation
- Excellent quality 18 mm sandwich wood cabinets with Formica interior
- Quiet slamming drawers and kitchen doors

## Bathrooms

- Wall hung toilets with concealed flushing tanks
- High-quality designed faucets
- Integrated bathroom cabinets with mirror and Corian sinks
- 90/90 large bathroom tiles



# Ground floor



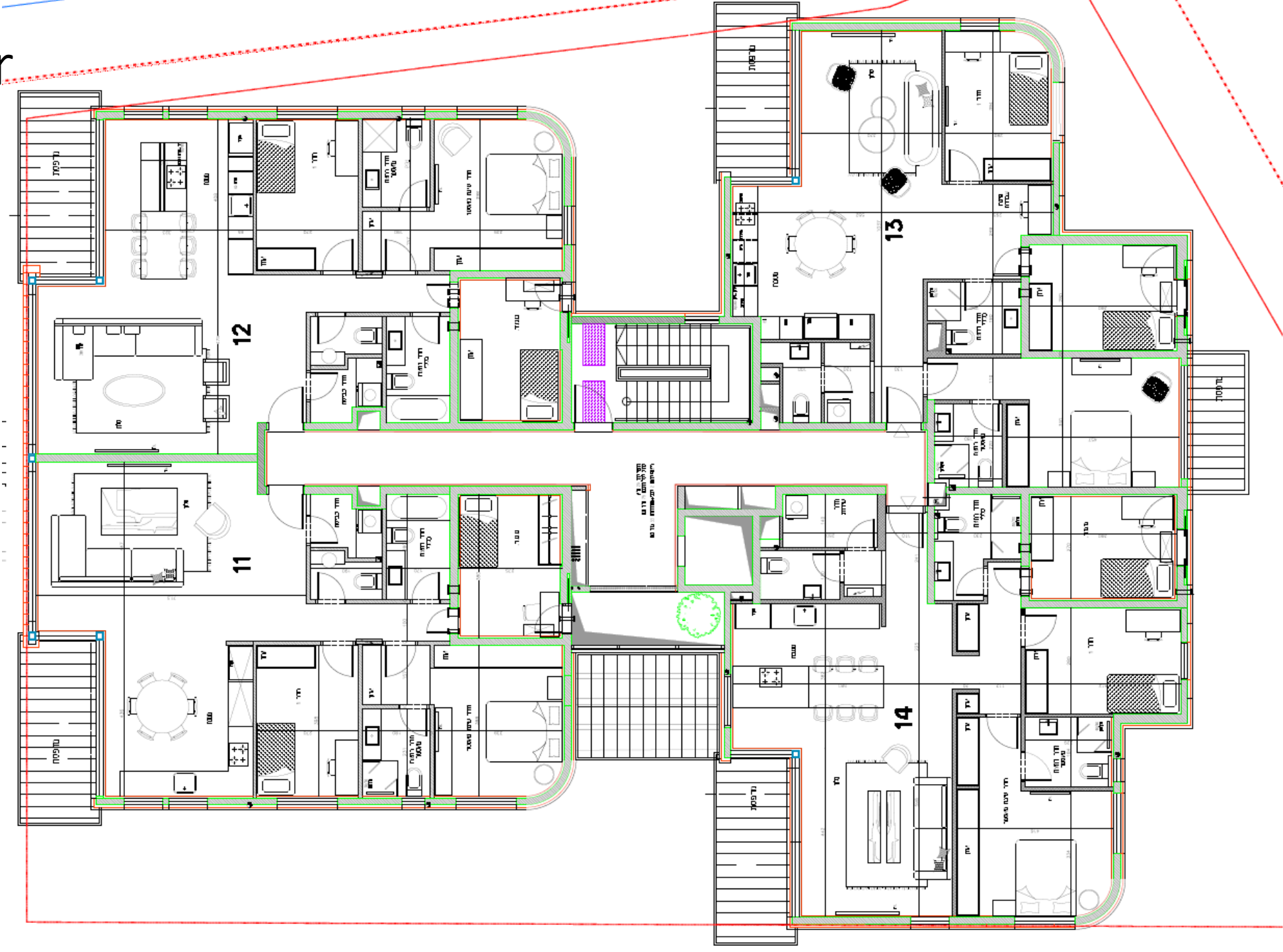


# 1<sup>st</sup> floor





2<sup>nd</sup> floor





Architectural floor plan of a building, oriented vertically on the page. The plan is divided into two main sections, labeled 15 and 16. Section 15 is on the left, and Section 16 is on the right. The plan shows various rooms, corridors, and structural elements. Dimensions are provided in meters. A north arrow is located in the bottom right corner. The plan is oriented vertically on the page.